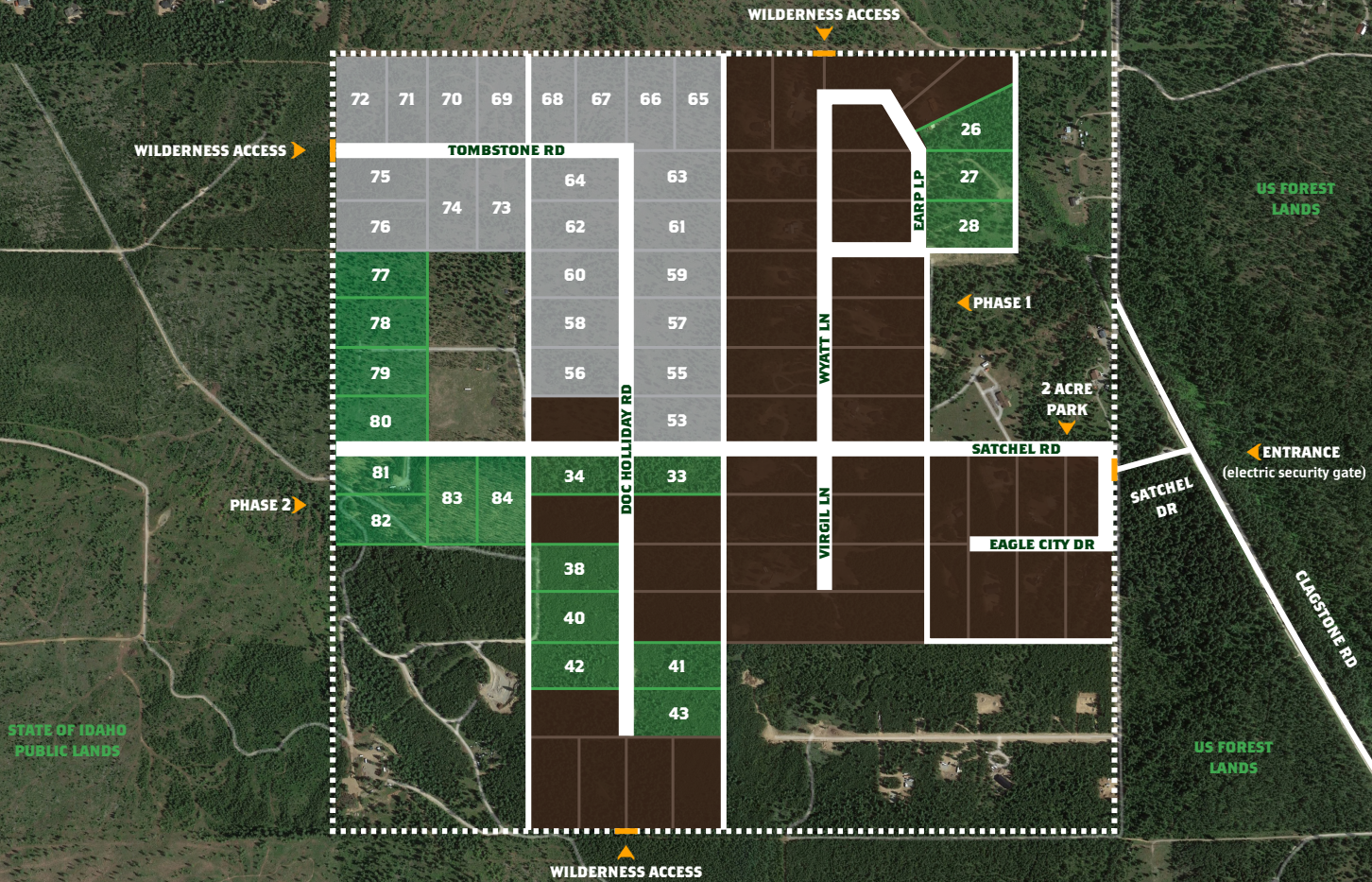


CLAGSTONE RANCH

YOUR NORTH IDAHO SANCTUARY



AVAILABLE

NOT RELEASED

SOLD

CLAGSTONE RANCH IS A 380-ACRE PRIVATE, GATED COMMUNITY OF 5-ACRE HOMESTEADS SURROUNDED BY THOUSANDS OF ACRES OF PUBLIC ACCESS FOREST LANDS.

PARCEL AVAILABILITY AS OF:
APRIL 2024

208-254-1088
CLAGSTONERANCH.US